

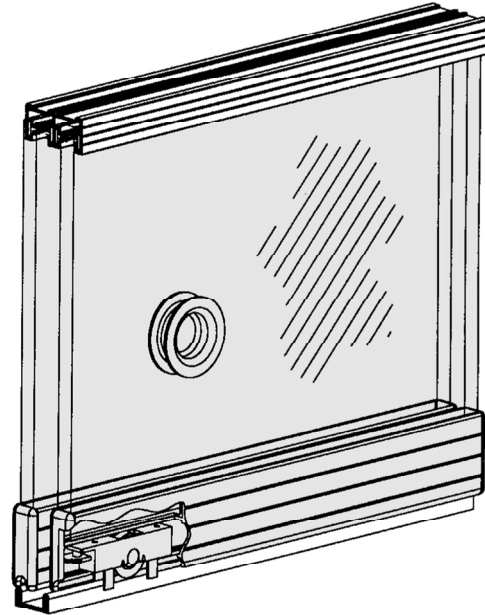
ZENITH

Capacity:

- Maximum weight: 16kg
- Maximum opening width: 1800mm for two passing panels.
- Glass size: up to 5mm.

Application:

Zenith's precision made components and exclusive features make it the ideal gear for showcases, display panels and interior windows. Single, double or multiple lines of track can be arranged to suit the application requirements.



Components:

- Top guide - aluminium alloy, single (501).
- Top guide - aluminium alloy, double (502).
- Top guide - aluminium alloy, double with woolpile strips for smooth quiet operation (502W).
- Bottom roller assembly - aluminium alloy glass rail (503).
- Bottom roller assembly - black nylon end caps (506).
- Bottom roller - nylon body and nylon wheel with stainless steel axle, clamp and screw into glass rail (504N).
- Bottom rails - aluminium alloy, single (80AXN).
- Bottom rails - aluminium alloy, double (500).
- P.V.C glazing strip (509).

Optional Extras:

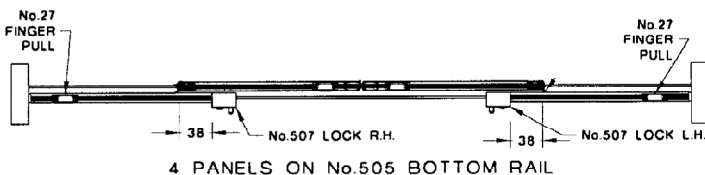
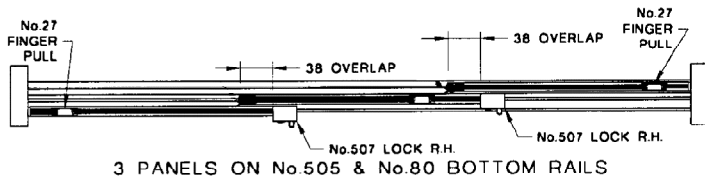
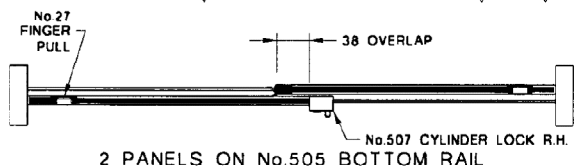
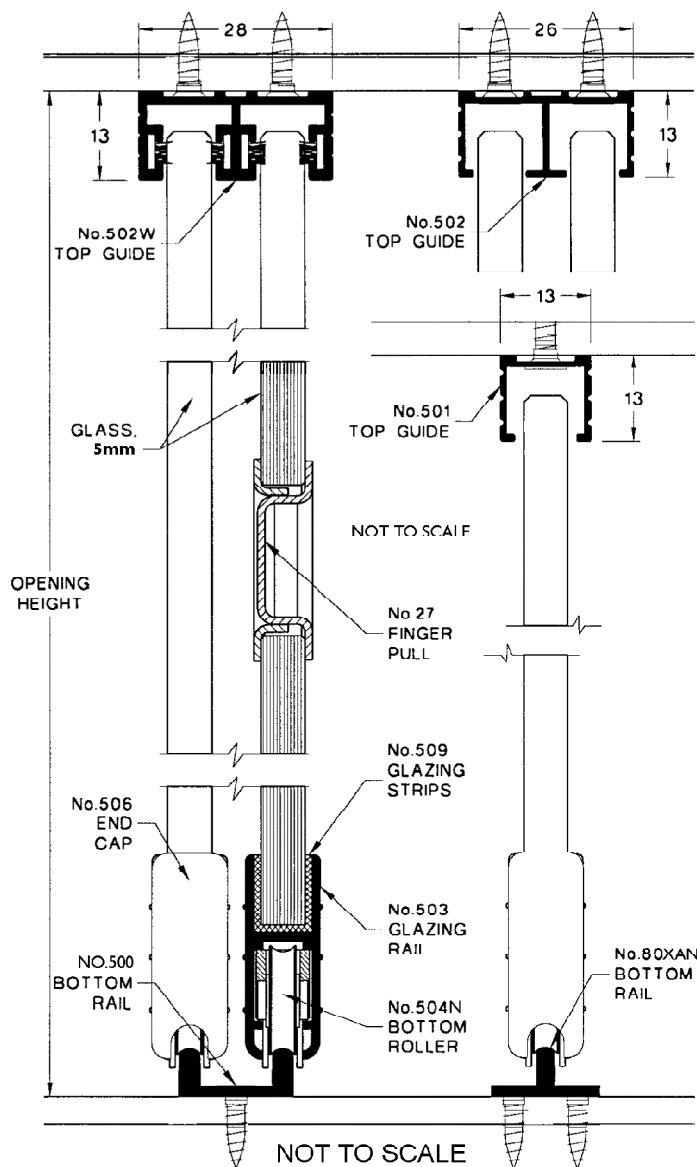
- Cylinder lock - chrome finish. Need to specify hand required on ordering, complete with two keys. (507).
- Finger pull - chrome finish fits 22mm hole in glass (27).

Packset Sizes:

- Z4 - Max. opening width 1200mm for 2 doors.
- Z5 - Max. opening width 1500mm for 2 doors.
- Z6 - Max. opening width 1800mm for 2 doors.

Please note:

- Aluminium alloy components are available in Satin Anodised Aluminium (SAA).
- For high usage applications near or on maximum recommended weight, two extra rollers should be used, fixed in pairs.
- Please refer to component section for component options and technical detail.

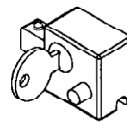


GLASS SIZE FOR DOUBLE PASSING PANELS
Height = Opening height less 31mm.
Width = Half opening width plus 16mm.

This provides a 38mm lap at centre.

INSTALLATION INSTRUCTIONS

- 1 Cut Bottom Rail and Top Guide to width of opening and fit in position using 12mm x 4g countersunk head wood screws.
- 2 Cut No.503 Glazing Rail to width of glass. End must be perfectly square.
- 3 Fit glass to No.503 Glazing Rail using Glazing Strip - No.509 for 5mm glass. Trim off surplus.
- 4 Insert the No.504 Bottom Rollers into ends of No.503 Glazing Rail. Hook No.506 End Caps onto pins on the Bottom Roller housing. (refer to note below, if fitting Lock.) Ensure that End Cap is hard against end of Glazing Rail. Tighten screws in roller housing.
- 5 Lift glass into Top Guide and lower onto Bottom Rail.
- 6 Fit No.27 Finger Pull in $\phi 22$ mm hole in glass.



OPTIONAL EXTRA

No.507 Cylinder Lock, - with 2 keys, Satin Finish. State hand required (R.H. illustrated). When fitted, lock replaces End Cap, refer Note 4, above. Tighten clamping screws.
Drill $\phi 8$ mm hole in inner Glazing Rail for lock-pin, when panels are fitted. Ensure that Lock is of the correct hand and that glass overlaps by 38mm in centre.